

# LARGE DIAMETER

## Flexible Metal Hoses



### DESIGN VALUES

|                  |            |
|------------------|------------|
| Without Braid    | MH 301 OG  |
| With Braid       | MH 301 MG  |
| Hose Material    | 304, 316L  |
| Braid Material   | 304, 316L  |
| Working Pressure | 0-25 barg  |
| Sizes            | DN65-DN150 |

Large diameter hoses are similar to industrial flexible metal hoses in character and are produced between 2 1/2" - 6".

This type of hoses are used for gas and liquid transfer in large industrial facilities, iron and steel factories, cement factories, fuel oil production and storage facilities, gas distribution facilities.

Large diameter hoses are preferred because of their ease of installation in moving parts.

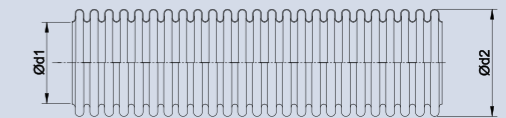
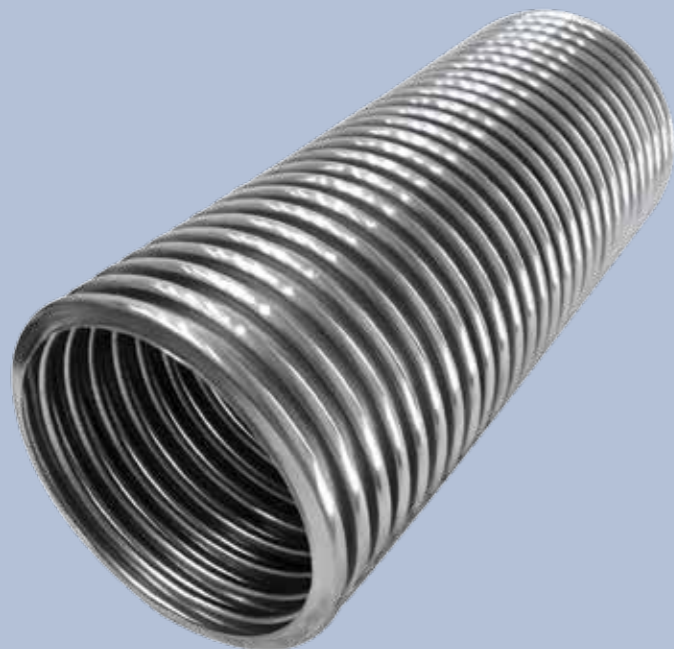
Our company has become a preferred global brand in large diameter hoses due to the possibility of manufacturing as a single piece in lengths of 100mt or more in line with customer demands.

### Advantages

- » Long product life
- » Can be used in moving parts
- » Can work at high pressures and temperatures
- » Easy to assemble
- » Hygienic products
- » In line with customer demands, we can manufacture as a single piece in desired lengths of 100mt or more

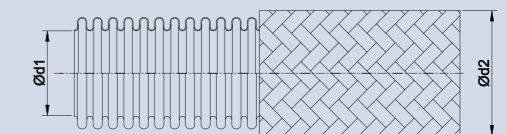
### Applications

- » Hydraulic systems
- » High pressure pumps
- » Gas distribution lines
- » Machinery industry
- » Chemical industry



### 301 OG

| DN  |        | Type      | d1    | d2    | Tolerance | Bending Radius |          | Working Pressure                   |                                | Weight (±%10) | Length |
|-----|--------|-----------|-------|-------|-----------|----------------|----------|------------------------------------|--------------------------------|---------------|--------|
| mm  | inch   |           | mm    | mm    | mm        | Once-only      | Frequent | Permissible Pressure at 20°C (SF3) | Nominal Pressure EN10380 (SF4) | kg/m          | m      |
| 65  | 2 1/2" | MH 301 OG | 65,8  | 77,9  | ±1,0      | 110            | 450      | 1,2                                |                                | 1,12          | 5-100  |
| 80  | 3"     | MH 301 OG | 80,9  | 95    | ±1,0      | 120            | 520      | 1                                  |                                | 1,5           | 5-60   |
| 100 | 4"     | MH 301 OG | 100,2 | 116,3 | ± 1,0     | 165            | 770      | 1,4                                |                                | 2,25          | 5-35   |
| 125 | 5"     | MH 301 OG | 125,8 | 144,8 | ± 1,2     | 550            | 1050     | 0,8                                |                                | 2,6           | 1-25   |
| 150 | 6"     | MH 301 OG | 150,0 | 170   | ± 1,5     | 725            | 1325     | 0,6                                |                                | 3,2           | 1-25   |



### 301 MG

| DN  |        | Type      | d1    | d2    | Tolerance | Bending Radius |          | Working Pressure                   |                                | Weight (±%10) | Length |
|-----|--------|-----------|-------|-------|-----------|----------------|----------|------------------------------------|--------------------------------|---------------|--------|
| mm  | inch   |           | mm    | mm    | mm        | Once-only      | Frequent | Permissible Pressure at 20°C (SF3) | Nominal Pressure EN10380 (SF4) | kg/m          | m      |
| 65  | 2 1/2" | MH 301 MG | 65,8  | 81,1  | ±1,0      | 205            | 450      | 33                                 | 25                             | 2,18          | 5-100  |
| 80  | 3"     | MH 301 MG | 80,9  | 98,2  | ±1,0      | 235            | 520      | 21                                 | 16                             | 2,7           | 5-60   |
| 100 | 4"     | MH 301 MG | 100,2 | 119,5 | ±1,0      | 295            | 770      | 16                                 | 12                             | 3,7           | 5-35   |
| 125 | 5"     | MH 301 MG | 125,8 | 148   | ± 1,2     | 650            | 1050     | 16                                 | 12                             | 4,4           | 1-25   |
| 150 | 6"     | MH 301 MG | 150,0 | 173,5 | ± 1,5     | 860            | 1325     | 8                                  | 6                              | 6,2           | 1-25   |